



DRONES in GROVES

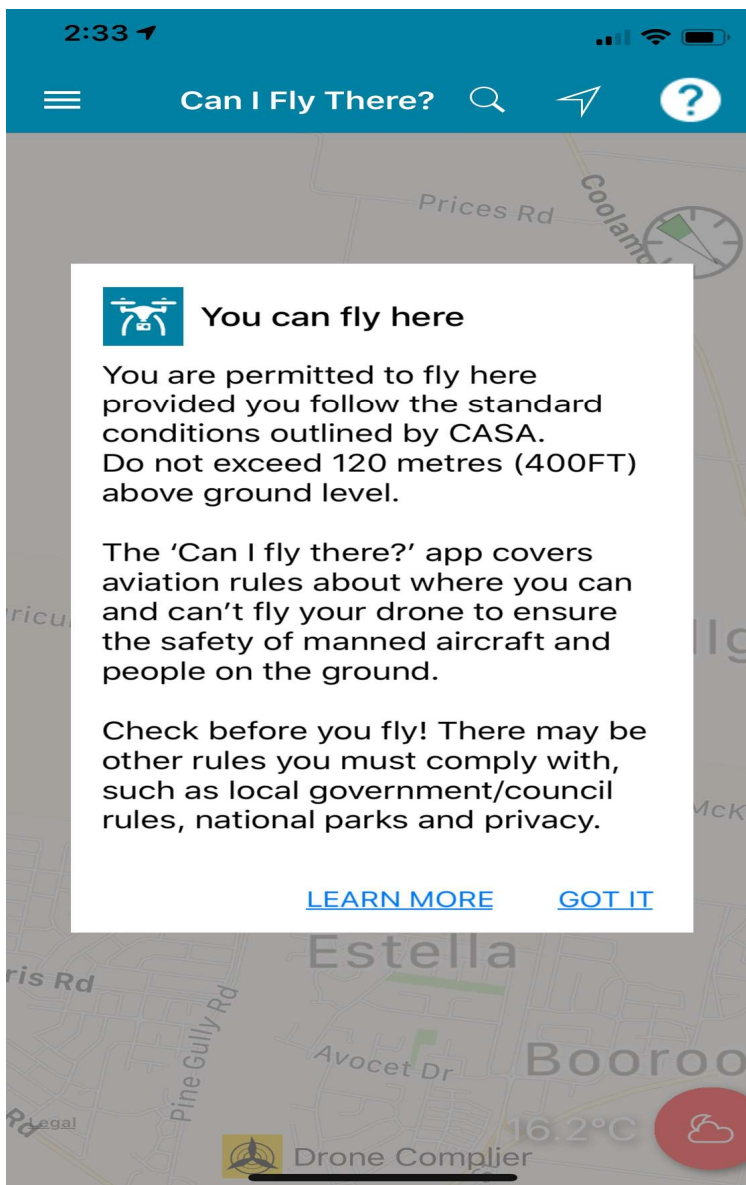
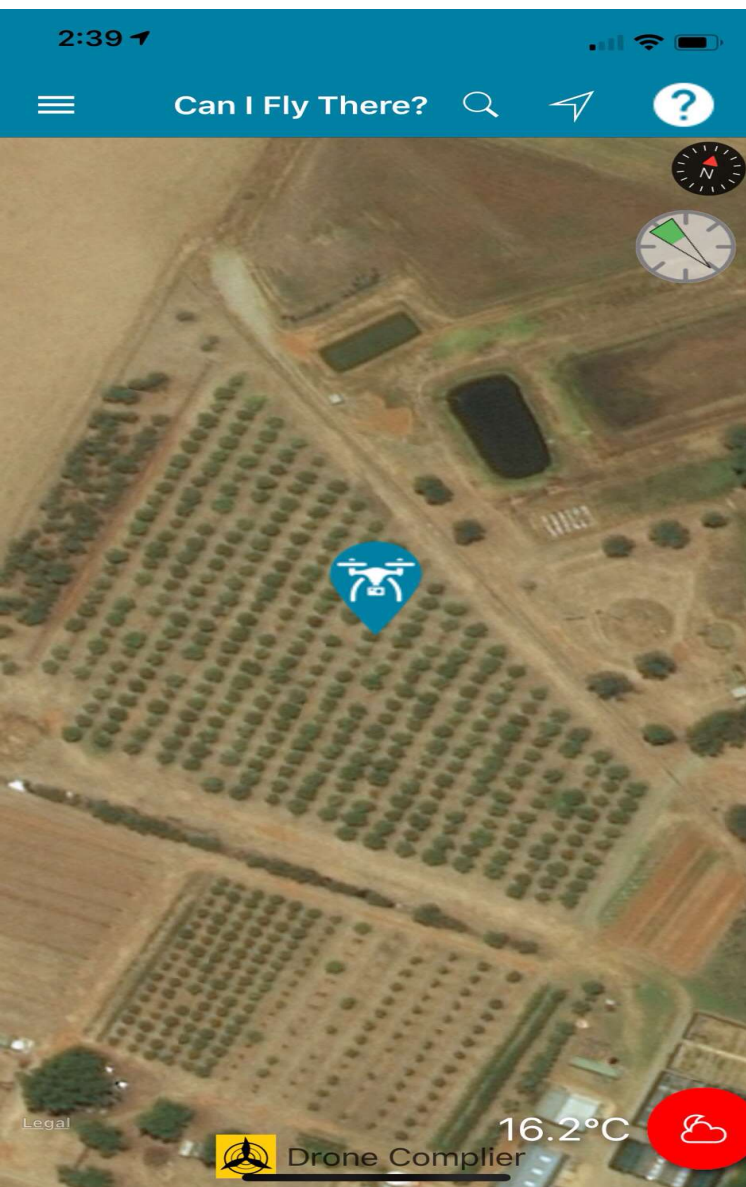
EARTHBOUND HORTICULTURE

Michael Thomsett

Getting started

- CASA RULES
- PRIVACY
- CAN I FLY THERE





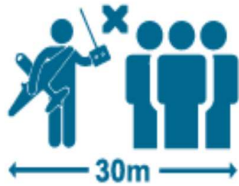
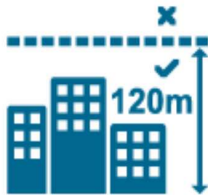
Rules

As well as flying in a safe location, you must also follow these rules:



You must only fly during the day and keep your drone within visual line-of-sight. This means being able to see the aircraft with your own eyes (rather than through a device) at all times.

You must not fly your drone higher than 120 metres (400ft) above the ground.



You must keep your drone at least 30 metres away from other people.

You must not fly your RPA over or near an area affecting public safety or where emergency operations are underway (without prior approval). This could include situations such as a car crash, police operations, a fire and associated firefighting efforts, and search and rescue.



You must only fly one RPA at a time.

You must not fly over or above people. This could include beaches, parks, events, or sport ovals where there is a game in progress.



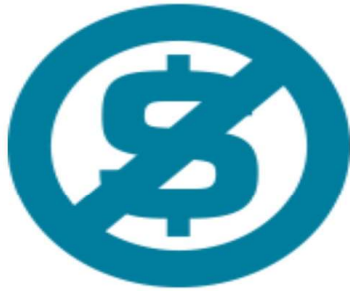
If your drone weighs more than 100g, you must keep at least 5.5km away from **controlled aerodromes**.



Flying within 5.5km of a **non-controlled aerodrome** or **helicopter landing site (HLS)** is possible, but only if no manned aircraft are operating to or from the aerodrome. If you become aware of manned aircraft operating to or from the aerodrome/HLS, you must manoeuvre away from the aircraft

and land as soon as
safely possible.

It is illegal to fly for
money or economic
reward unless you
have a drone
operators certificate,
or you are flying an
excluded RPA in the
sub-2kg or private
landholder category.



Respect personal
privacy: Don't record
or photograph
people without their
consent - this may
breach state laws.

Remember, you must
not operate your
drone in a way that
creates a hazard to
another aircraft,
person or property.



What can a drone do for me in my grove?

- ▶ SURVEY AND MONITORING
- ▶ DESIGN AND LAYOUT
- ▶ DETECT PLANT STRESS - PESTS AND DISEASE OUTBREAKS AND MUCH MORE
- ▶ MARKETING
- ▶ COLLECT VALUABLE DATA
- ▶ TRACK CHANGES OVER TIME











AUSTRALIAN & NEW ZEALAND
**Olivegrower
& processor**
NATIONAL JOURNAL OF THE OLIVE INDUSTRY



**Field days provide
missing link**

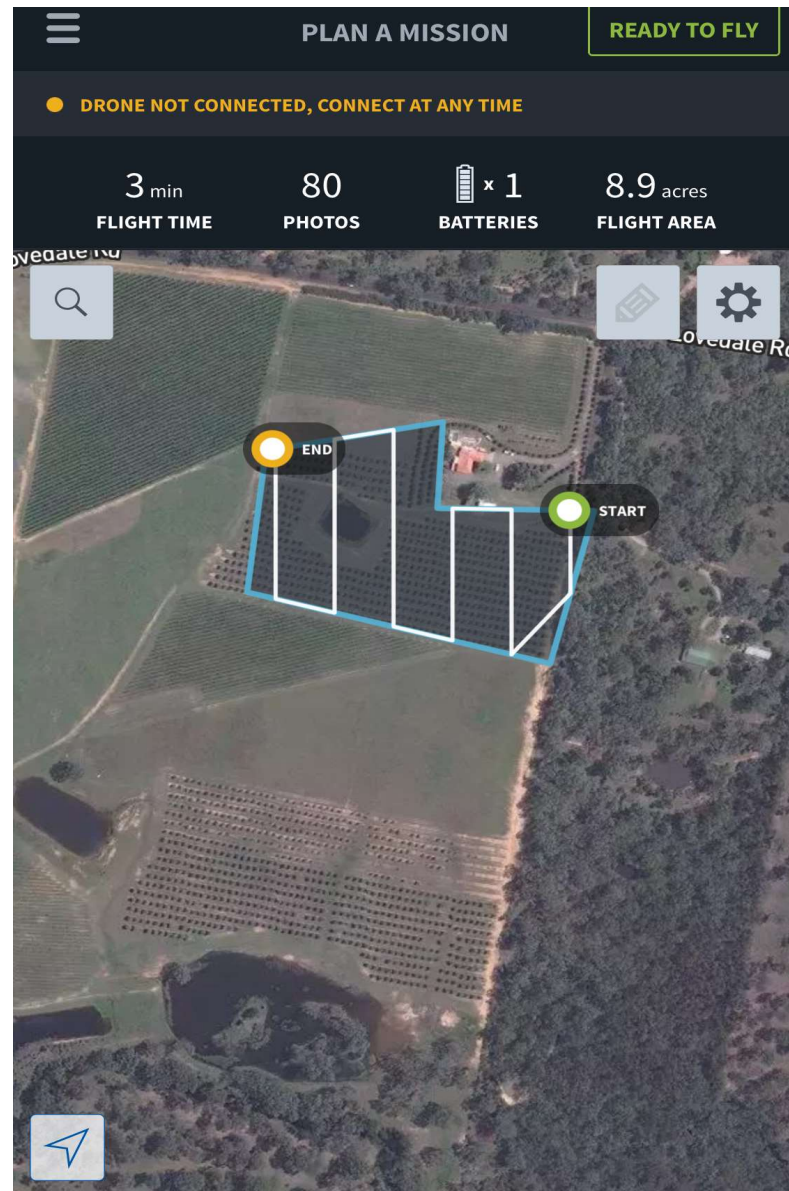
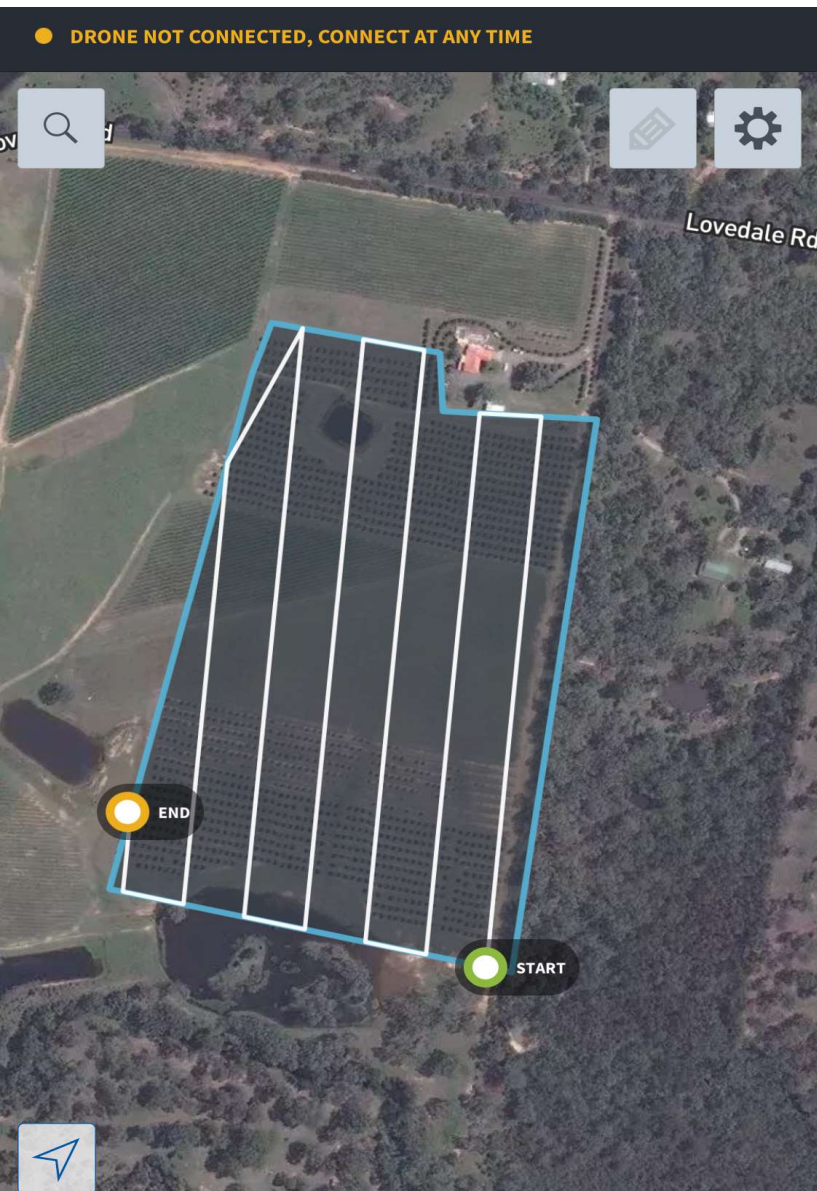
September
2018

Conference preview
Harvest report: Tas & NZ
Pruning
Olive lace bug management



Apps and software

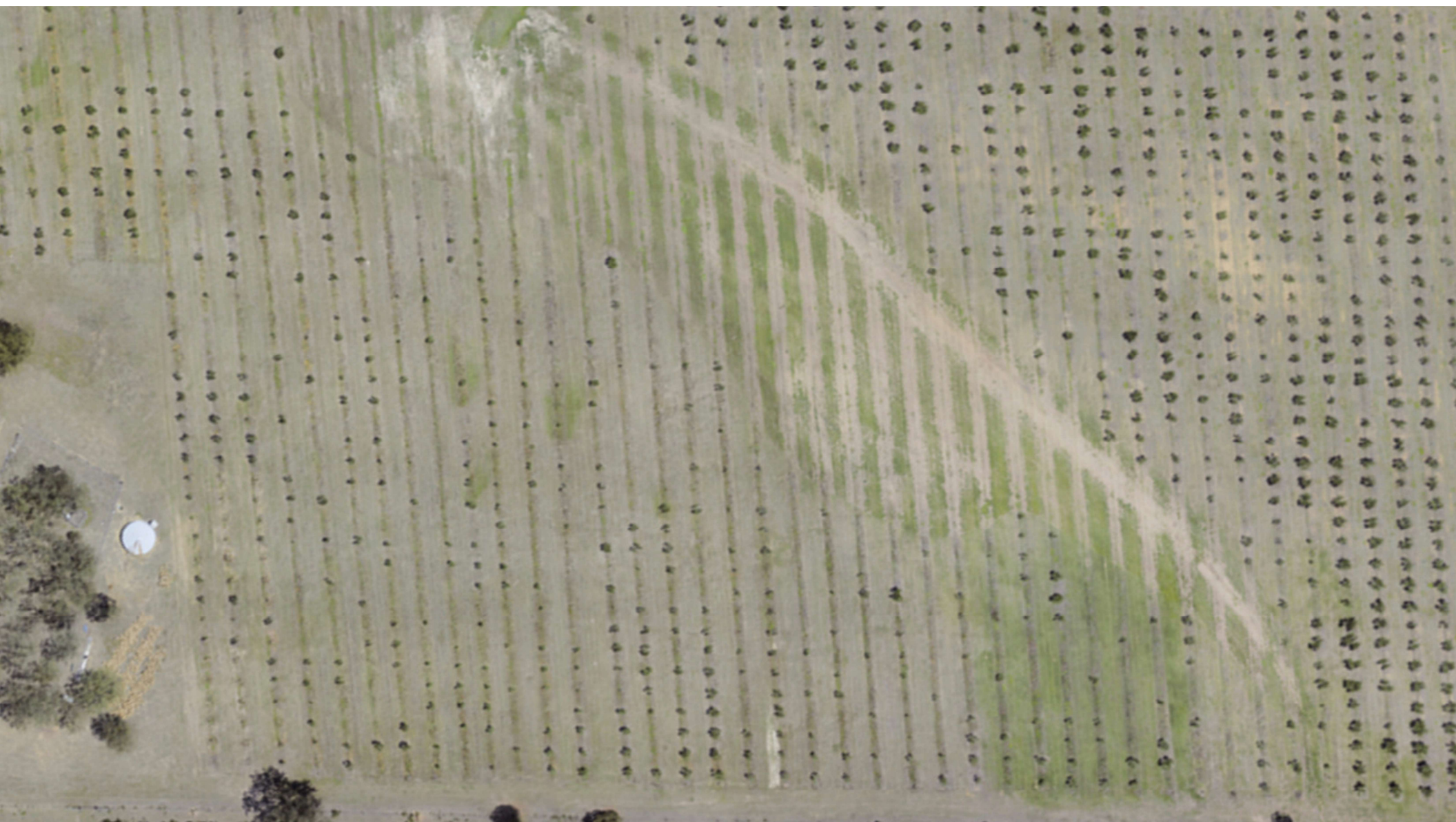
- ▶ SKY CATCH , DRONE DEPLOY, AND LITCHI - MAPPING MISSION APPS
- ▶ Sensors and Analytics. **Slantrange**











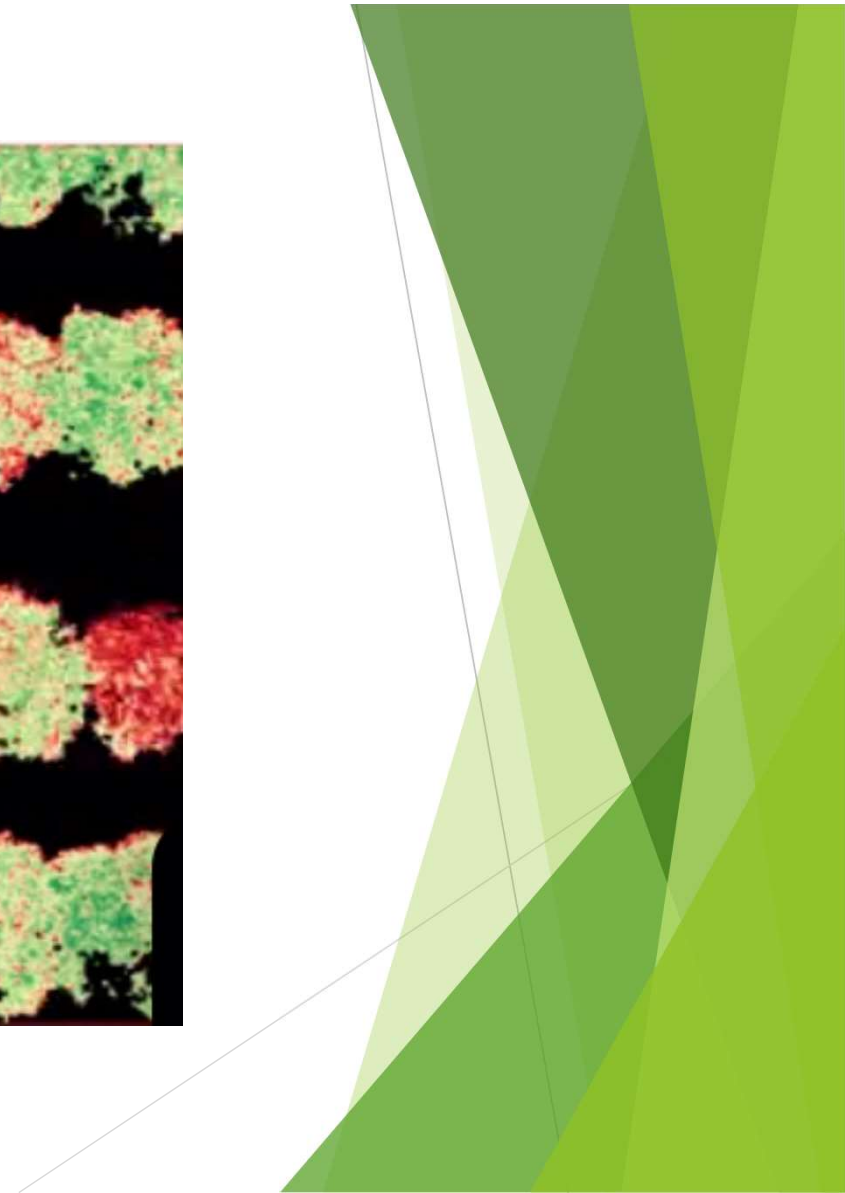
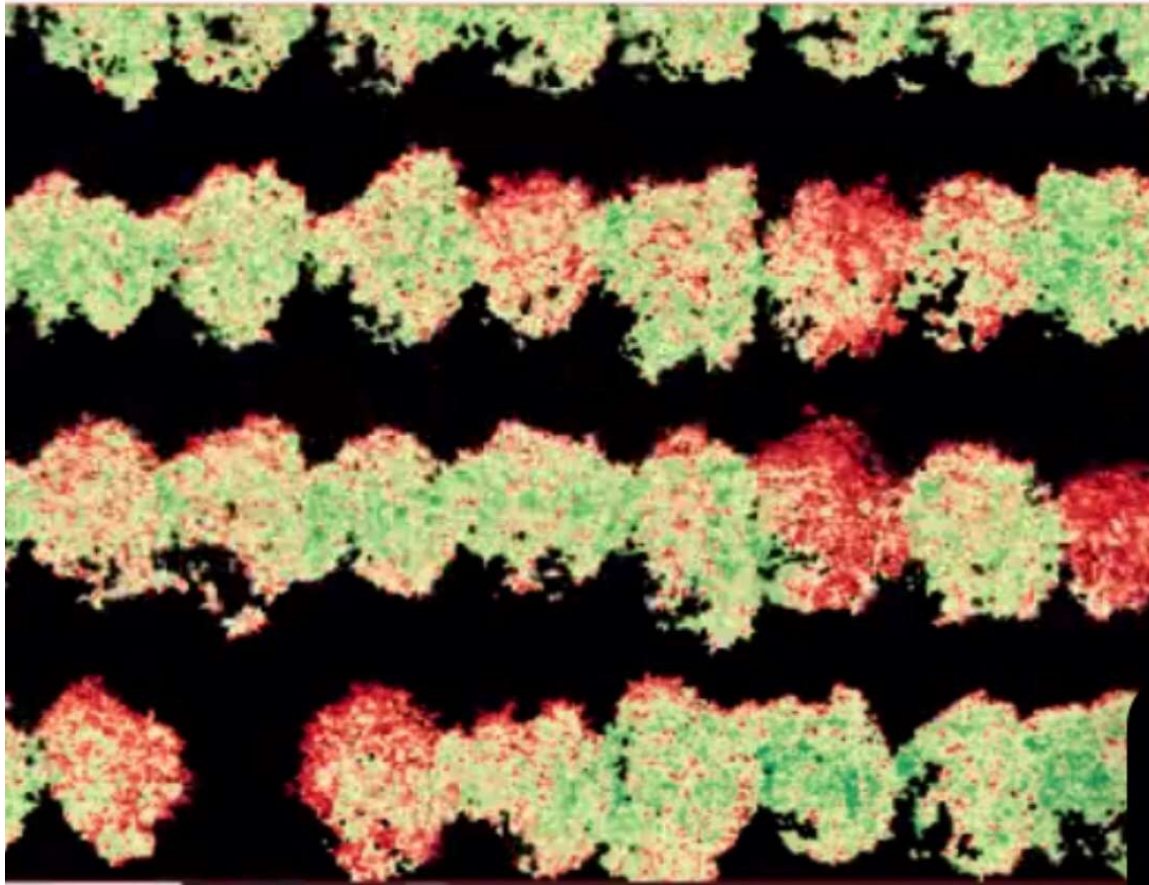
SlantRange Solution

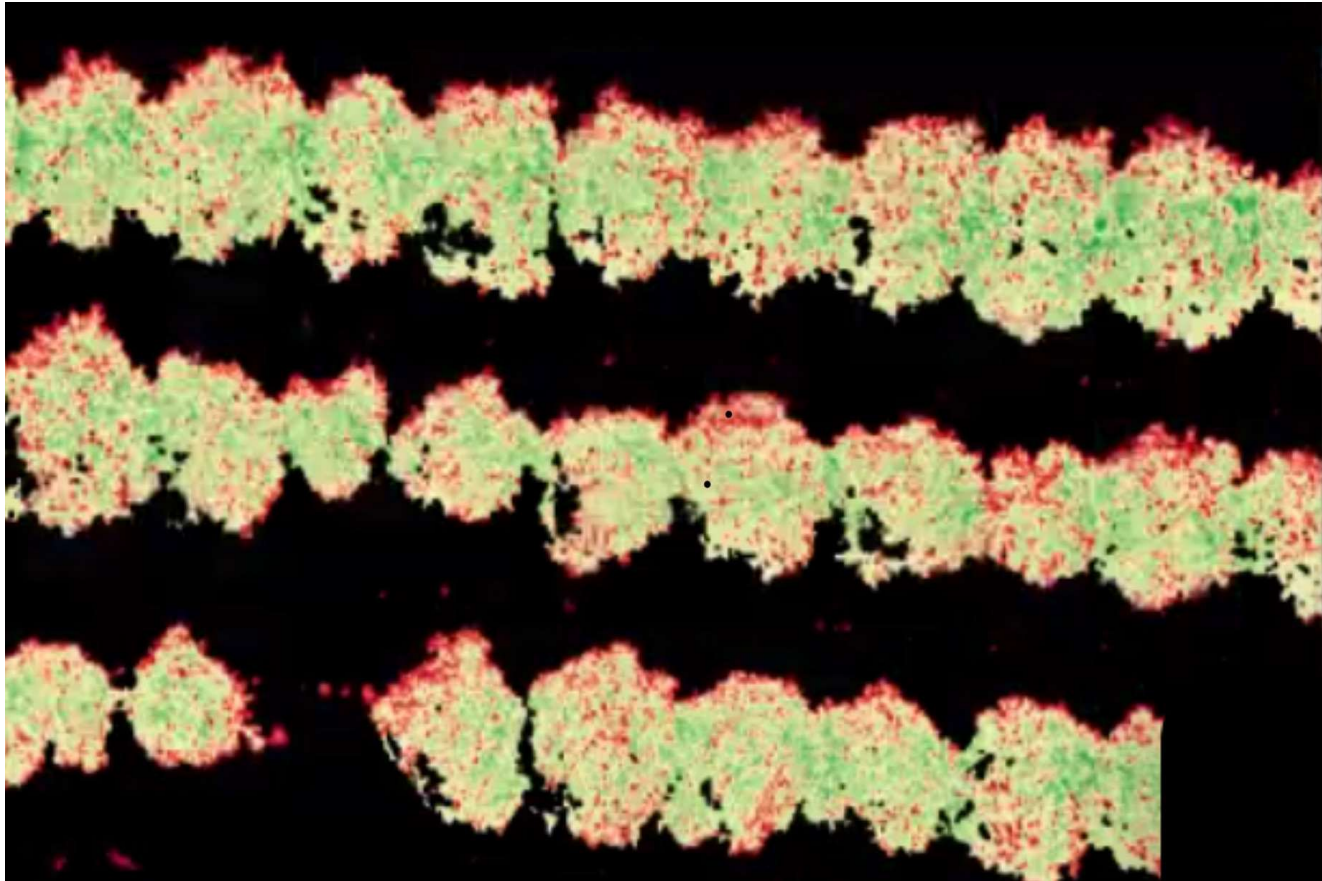
Multispectral Sensor

Analytics Software

Data Services







EARTHBOUND HORTICULTURE

- ▶ Contact : MICHAEL THOMSETT
- ▶ PH : 0427 373 111
- ▶ Email : earthboundhorticulture@gmail.com
- ▶ thomsett.mail@gmail.com