

# Panel Session: Why Did I Get No Fruit This Year? And What Can I Do Instead?

**AOA 2024 Conference**

October 24 2024

# Topics — plenty to discuss, may not get to them all

- **pest and disease impacts**

The importance of **vigilant monitoring and proactive control of outbreaks - timing**

- **weather events – frost, severe heat at flowering**
- **nutrition – the impact of composted pomace?**
- **harvest timing – mid June the rule of thumb cutoff?**
- **pruning for health and productivity**
- **irrigation** in our changing climate; how much do we need? what if it is limited?
- The **opportunities presented by a very low or non-cropping year** (such as pruning for the future and to avoid overcropping).

# Timing of protective chemical application

- How to cover the trees during the window of opportunity?
- Aerial application?

- Photo courtesy Andrew Taylor

Helicopters too - MT



5 Olive groves  
50 hectares  
*Spray application  
complete in less  
than 2 hours.*



Arrival Ground crew

*Water provided on site.*

*6 hour tank and system  
decontamination process if  
prior herbicide use.*

Raven II R44

*ULV nozzles x 50*

Mapping the  
boundary of the  
groves

- GPS on board  
saves data for  
reference during  
application.

Mapping the groves.

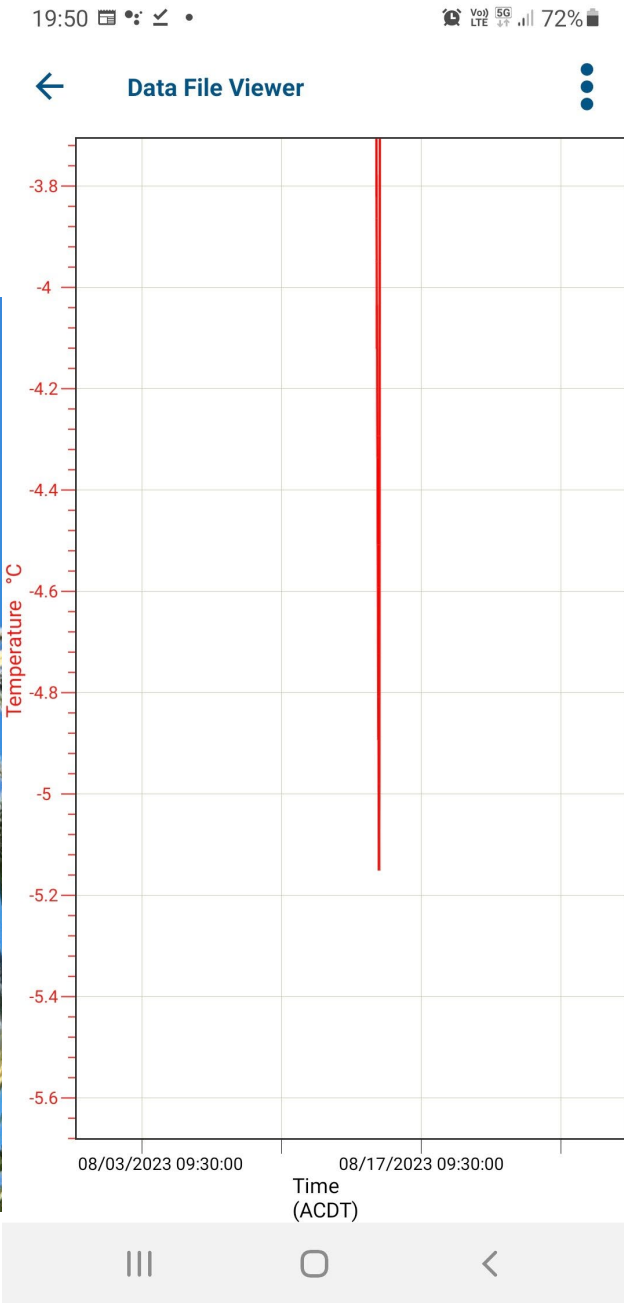


# Ultra low Volume Application

*80 -100 micron droplet size.*

*Rate applied = 30 litres  
solution / hectare.*

# Frost





Examples of  
damage



Post frost

# Topics — plenty to discuss, may not get to them all

- pest and disease impacts

The importance of vigilant monitoring and proactive control of outbreaks - timing

- weather events – frost, severe heat at flowering
- **nutrition – the impact of composted pomace?**
- **harvest timing – mid June the rule of thumb cutoff?**
- **pruning for health and productivity**
- **irrigation** in our changing climate; how much do we need? what if it is limited?
- The **opportunities presented by a very low or non-cropping year** (such as pruning for the future and to avoid overcropping).